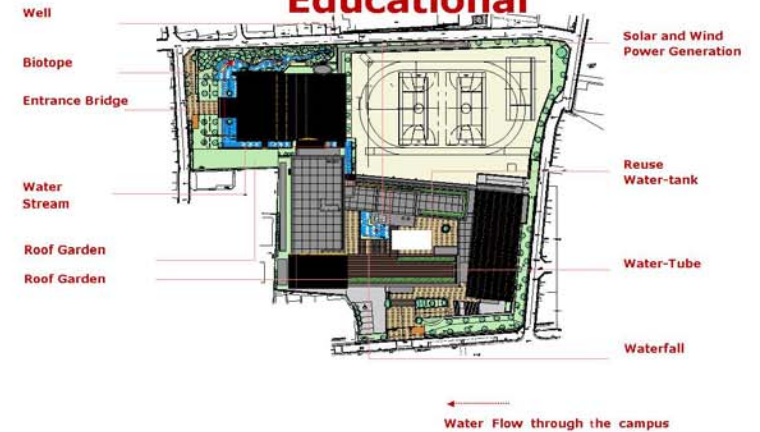


Human-friendly, Ecology, Educational

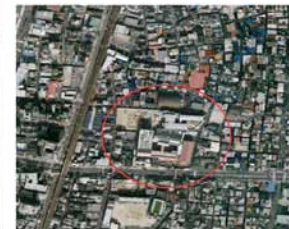


This is a school built in the midst of the downtown of Osaka city. Students can learn about the sustainability and think about environment matters through the school building itself.

By the stream run through this campus, they can also enjoy the nature. Stream makes chattering sounds, blinks of the light, smells of the water and soothing wind. Students can understand the beauty of the nature using their 5 senses.



Corridor along with stream



Chapel finished with natural materials

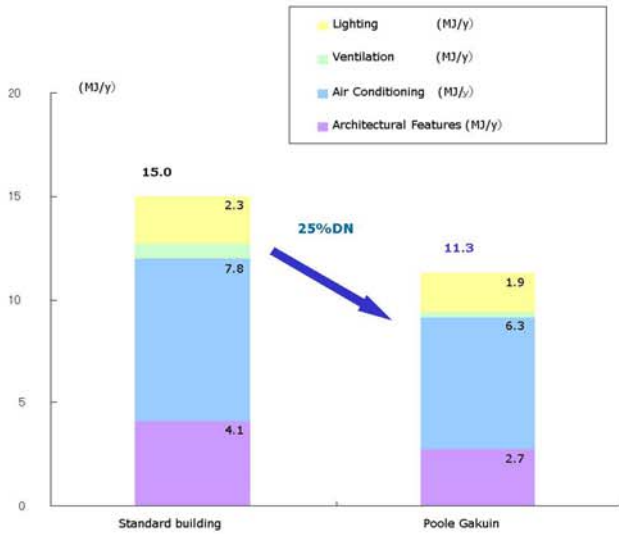
Entrance yard ; students pass over the bridge everyday.

Sustainable features

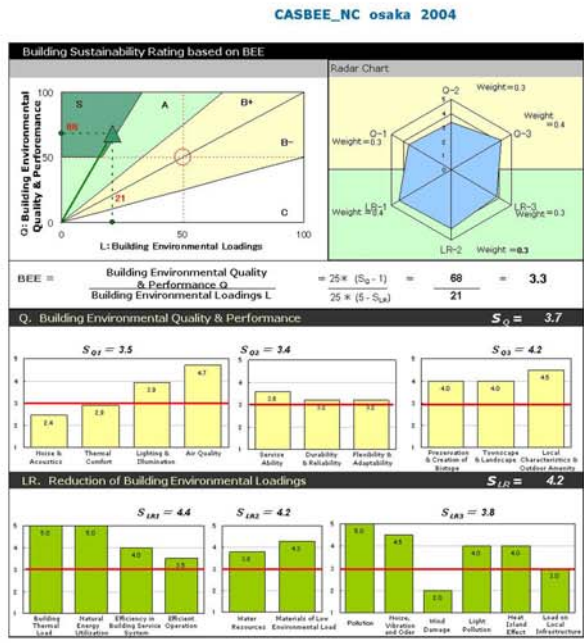
- Lighting**
 - Highly efficient lighting
 - Daylight sensor
- Ventilation**
 - Total heat exchanger
- Air Conditioning**
 - Water tube (Cool and hot tube through the water)
 - Individual control air-conditioning
- Architectural features**
 - High insulation
 - Small windows to reduce heat load



25% Energy Reduction



Assessment Results Casbee S



Water stream integrated with ecological technology makes human-friendly atmosphere for students



Biotope



Entrance Bridge



Water Stream through the campus



Waterfall in the courtyard